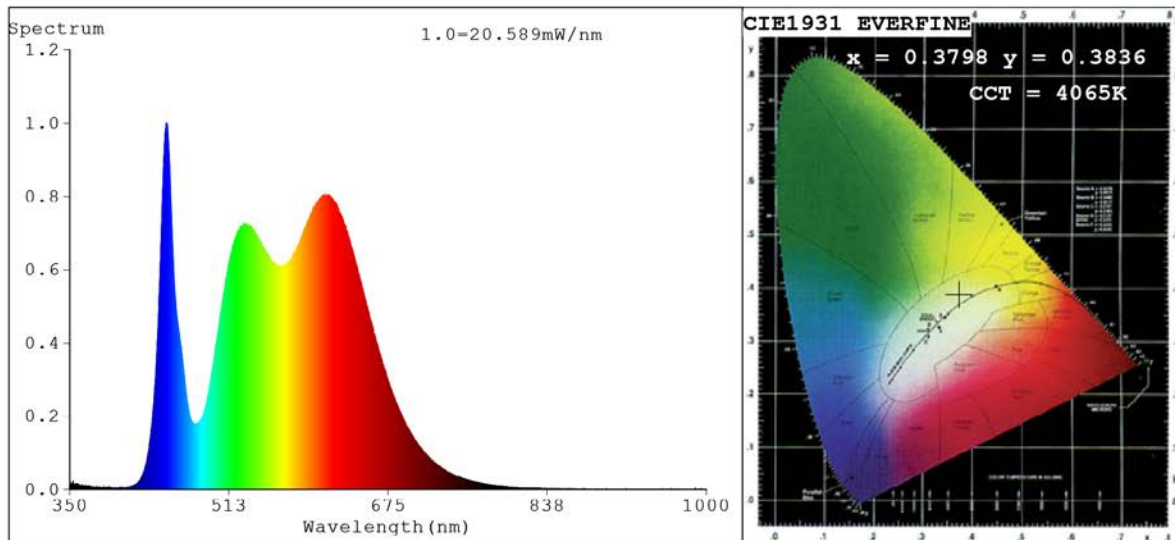


## Spectrum Test Report



### Color Parameters:

Chromaticity Coordinate:  $x=0.3798$   $y=0.3836$   $u'=0.2220$   $v'=0.5045$   
 CCT=4065K (Duv=0.0034) Dominant WL:Ld =577.1nm Purity=29.1%  
 Ratio:R=19.8% G=77.0% B=3.2%;;Peak WL:Lp=448.5nm FWHM=17.6nm  
 Render Index:Ra=91.7 CRI=87.1 TM30:Rf=90 Rg=101  
 R1 =95 R2 =92 R3 =89 R4 =93 R5 =93 R6 =90 R7 =94  
 R8 =87 R9 =59 R10=81 R11=91 R12=67 R13=94 R14=93 R15=90

### Photo Parameters:

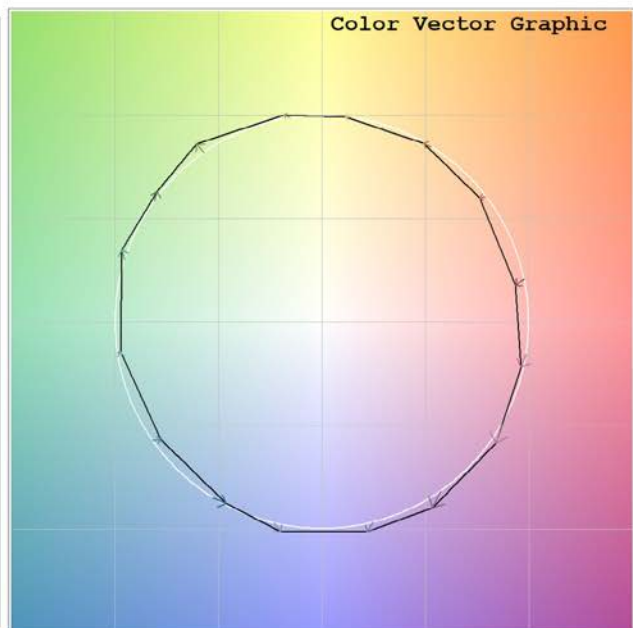
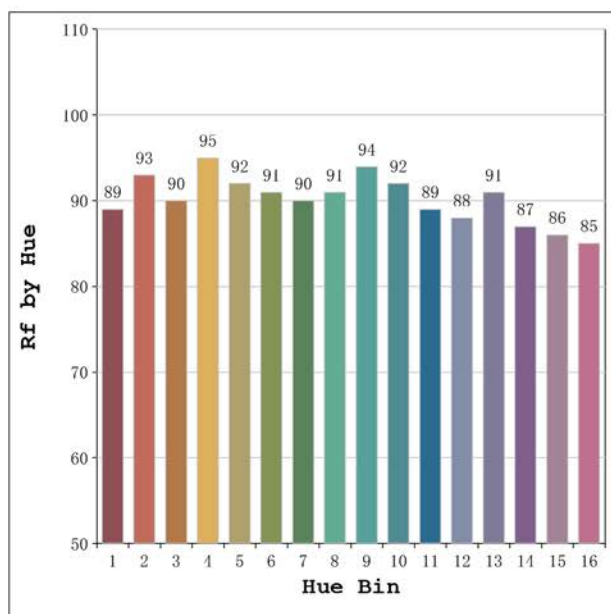
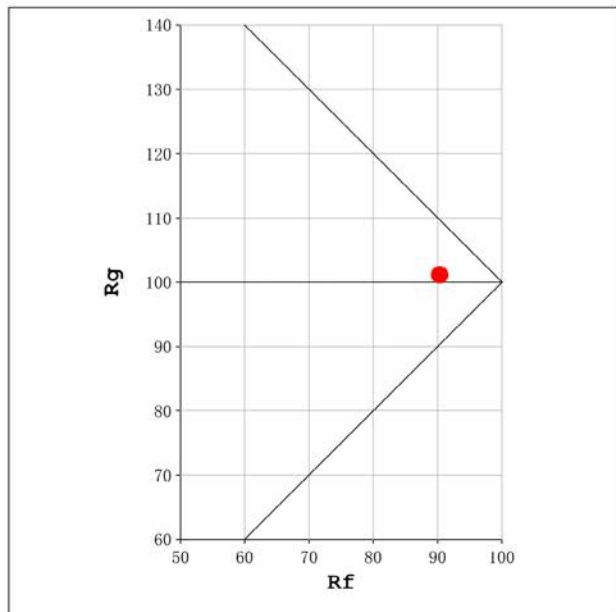
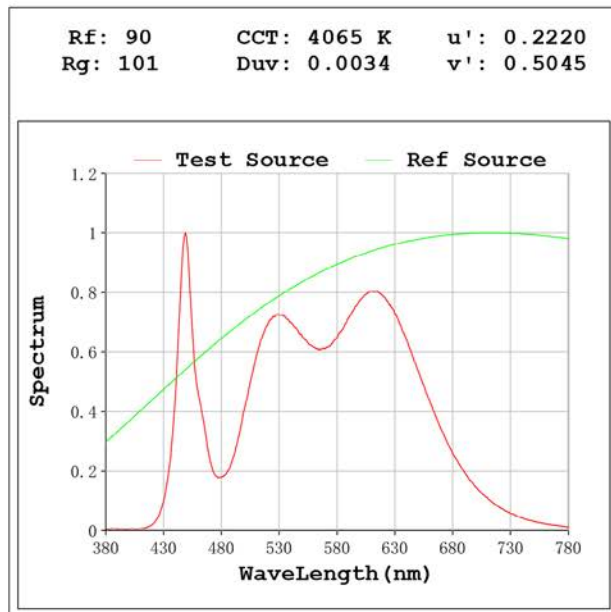
Flux = 972.4 lm Eff. : 96.66 lm/W Fe = 3.105 W

### Electrical parameters:

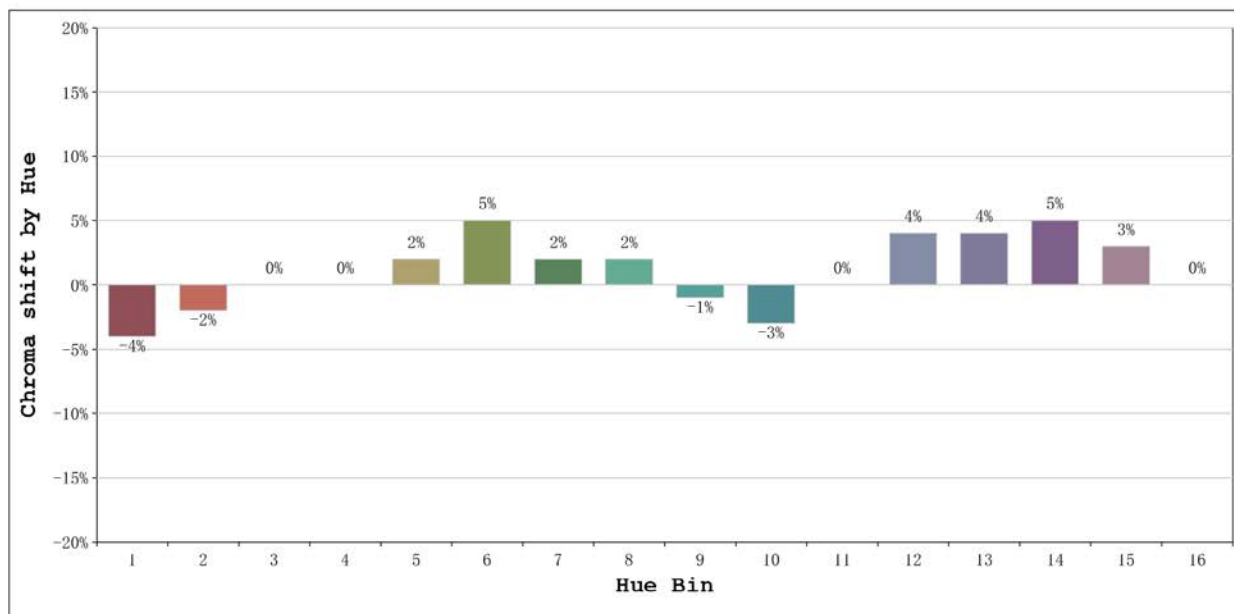
V = 23.998 V I = 0.4192 A P = 10.06 W PF = 1.000

Status: Integral T = 1401 ms Ip = 45103 (69%)

Model:Ecoled Élite Gold Slim 4000	Number: 31.169
Tester:Sergio Carneros	Date:2024-12-17 15:14:05
Temperature:27Deg	Humidity:40%
Manufacturer:Luz Negra S.L	Remarks:100cm de tira flexible



Model:Ecoled Élite Gold Slim 4000	Number: 31.169
Tester:Sergio Carneros	Date:2024-12-17 15:14:05
Temperature:27Deg	Humidity:40%
Manufacturer:Luz Negra S.L	Remarks:100cm de tira flexible



			Graphic shift(%)	
Hue Bin	Hue Angle	Rf	Chroma	Hue
1	0.0° - 22.5°	89	-4	-1
2	22.5° - 45.0°	93	-2	1
3	45.0° - 67.5°	90	0	4
4	67.5° - 90.0°	95	0	2
5	90.0° - 112.5°	92	2	3
6	112.5° - 135.0°	91	5	1
7	135.0° - 157.5°	90	2	-3
8	157.5° - 180.0°	91	2	-3
9	180.0° - 202.5°	94	-1	-1
10	202.5° - 225.0°	92	-3	2
11	225.0° - 247.5°	89	0	7
12	247.5° - 270.0°	88	4	4
13	270.0° - 292.5°	91	4	-2
14	292.5° - 315.0°	87	5	-7
15	315.0° - 337.5°	86	3	-8
16	337.5° - 360.0°	85	0	-6

Model:Ecoled Élite Gold Slim 4000 Number: 31.169  
 Tester:Sergio Carneros Date:2024-12-17 15:14:05  
 Temperature:27Deg Humidity:40%  
 Manufacturer:Luz Negra S.L Remarks:100cm de tira flexible